

Dear Members,

This has been a challenging year, but we have had two great opportunities to connect trails in Goldstream Valley. We acquired the Steffensen-Dix parcel bordering Blueberry Preserves, and just began a promising discussion to conserve a large block of forest and wetland in western Goldstream Valley. We are not far from our dream of a completed greenbelt!

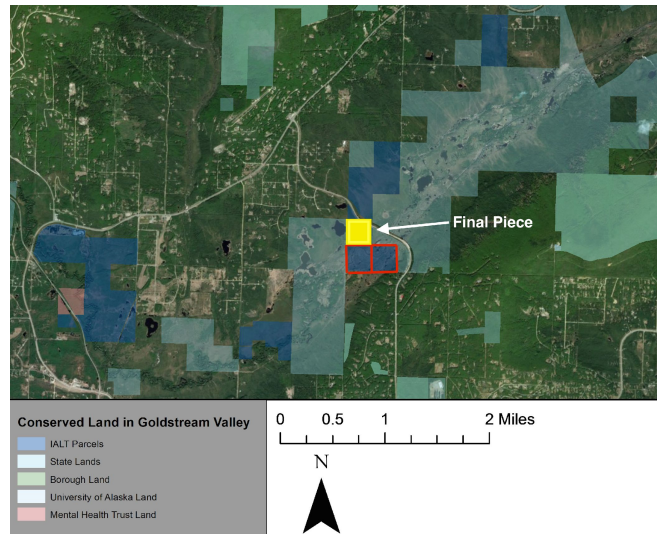
Thank you to all who attended our Annual Meeting, which was over Zoom this year on October 28, 2020. We heard an update on the Chinook Conservation Park and made plans for constructing footbridges to connect trails over Cripple Creek in Summer 2021.

-Christin Swearingen, Conservation Coordinator

Steffensen-Dix Parcel

Thanks to an outpouring of support from you-- our wonderful members-- IALT was able to purchase the final piece of the Steffensen-Dix property on October 20, 2020, connecting the Goldstream Public Use Area with our Blueberry Preserves property.

Frank Steffensen and his sister, Christina Dix, sold their property to IALT with the wish that it be conserved forever. After traveling to Alaska with her family in their station wagon in 1958, Frank and Christina's mother initially purchased the property in the mid-1960s. They frequently visited from out of state. Between roughly 1985 and 2005, Frank lived in a dry cabin on the northern parcel, watching the forest mature while observing a steady increase in summer bird populations. Both Frank and Christina value having the parcel's wetlands and green space conserved, and they see the existing winter trail as an appropriate use for the community to enjoy.



This piece is truly a keystone for central Goldstream Valley. These parcels connect two parts of the Goldstream Public Use area across Ballaine Road. They are prime areas for winter recreation, protect a section of Goldstream creek, as well as provide habitat for moose, foxes, beaver and birds! The land is now protected in perpetuity, but donations are still needed to repay a \$20,000 loan.

New Property, Old Creek

Osborne Property

In July 2020 Daniel Osborne generously donated a 40-acre parcel of forest in central Goldstream valley. Back when Mr. Osborne purchased the property, it was surrounded by State lands that were open to the public, and he felt as though “from my cabin, by crossing only a single road and careful choice of route, one could hike (maybe with a wade or short swim) all the way to the Arctic Ocean or Bering Sea without crossing another road.” Mr. Osborne saved the land from development in order to keep it wild forever.



Cripple Creek Restoration

A major cause for celebration this year is the completion of the Cripple Creek Restoration project, returning the water to its original creekbed after 85 years! Last summer volunteers constructed the 2 mile loop trail along the creek channel, and more work is scheduled for next summer. Check out our spring newsletter for more information!

The word for “trail” in Lower Tanana is “tena”.



End-of-the-Year Donations

The Interior Alaska Land Trust works to protect the places and wildlife you love. You can donate online at interioraklandtrust.org/contact/donate or by mailing a check payable to Interior Alaska Land Trust to:

Interior Alaska Land Trust
P.O. Box 84169
Fairbanks, AK 99708

To make a credit card donation over the phone, please call (907) 322-3462 between 9:00am and 5:00pm, Alaska Time.

Your donation is fully tax deductible (Tax ID Number: 92-0156596).

Thank you for all your support. See you outside!