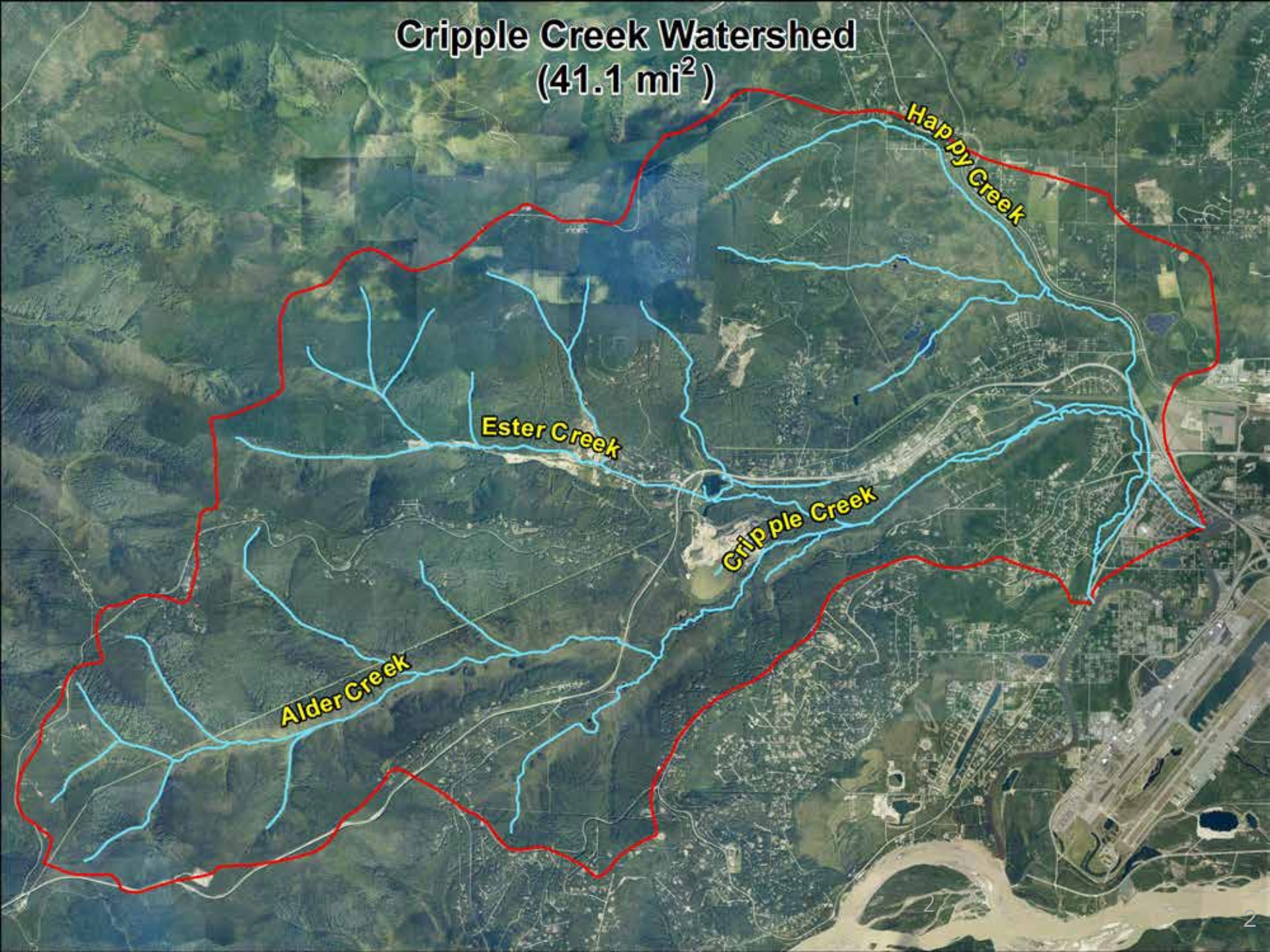


A photograph of a person walking away from the camera through a field of tall green grass. The person is wearing a white shirt, dark pants, and a cap, and is carrying a large orange bag or pack. The field is surrounded by dense green trees and foliage. The text is overlaid on the top half of the image.

# **Cripple Creek A Channel in Search of It's Water**

**Bob Henszey  
U.S. Fish and Wildlife Service  
[bob\\_henszey@fws.gov](mailto:bob_henszey@fws.gov)**

# Cripple Creek Watershed (41.1 mi<sup>2</sup>)



Happy Creek

Ester Creek

Cripple Creek

Alder Creek

# 1935 Large-scale Mining Cripple Creek Area



Fig. 3-3 This is a view of Cripple stripping, with pipe suspension bridge and Chena ditch visible in the background. (Boswell 1979)

- May 1935 muck stripping for the Cripple Creek area started (Boswell 1979, p 27).
- Ester Creek may have been earlier?

# 1935 Cripple Creek Drain Constructed



Fig. 4-11 This is a view of the start of Cripple Drain in 1935. (Boswell 1979)

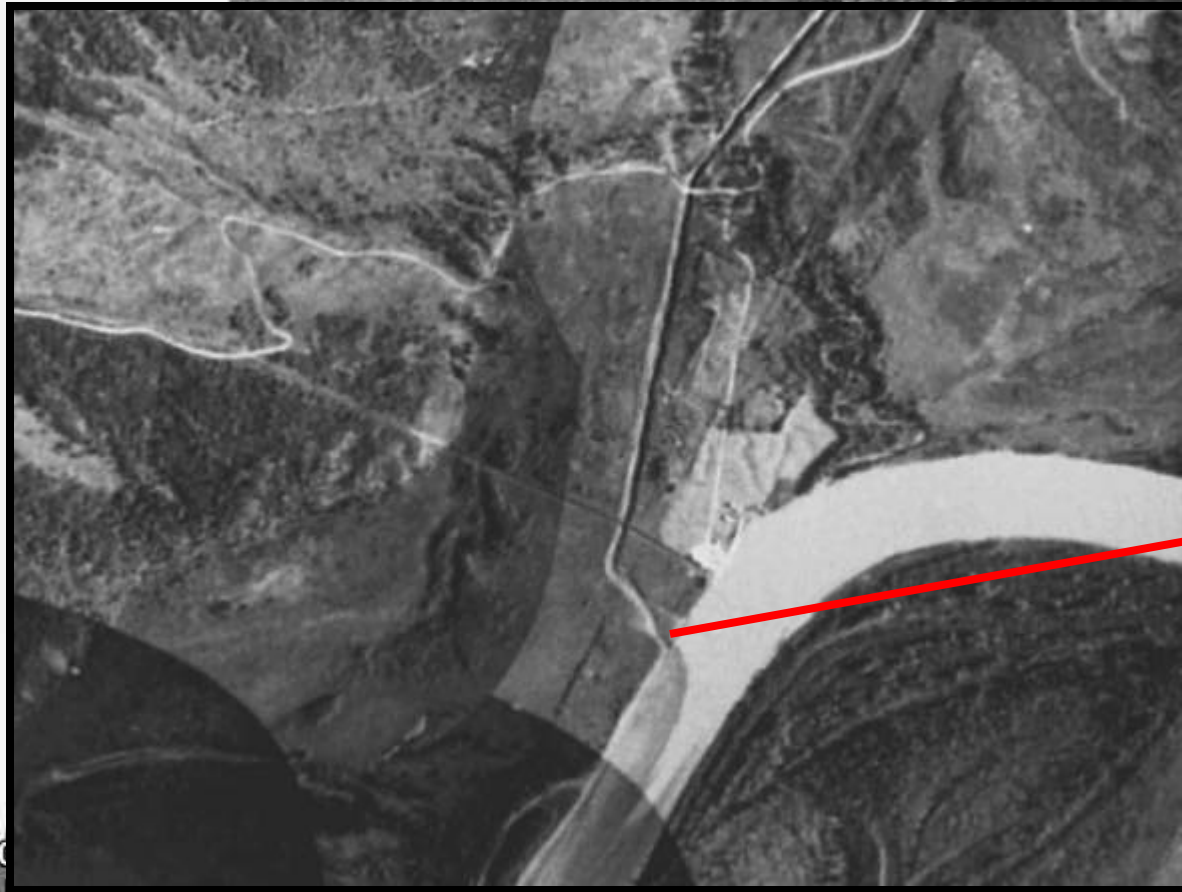
- There were two alternatives for providing drainage to strip the muck from this area. One was an open drain to the Chena Slough, about six miles long. The other was a 10,200-foot tunnel through the ridge which separates Cripple Creek and the Chena Slough (Boswell 1979, p 27).

# Cripple Creek 1938

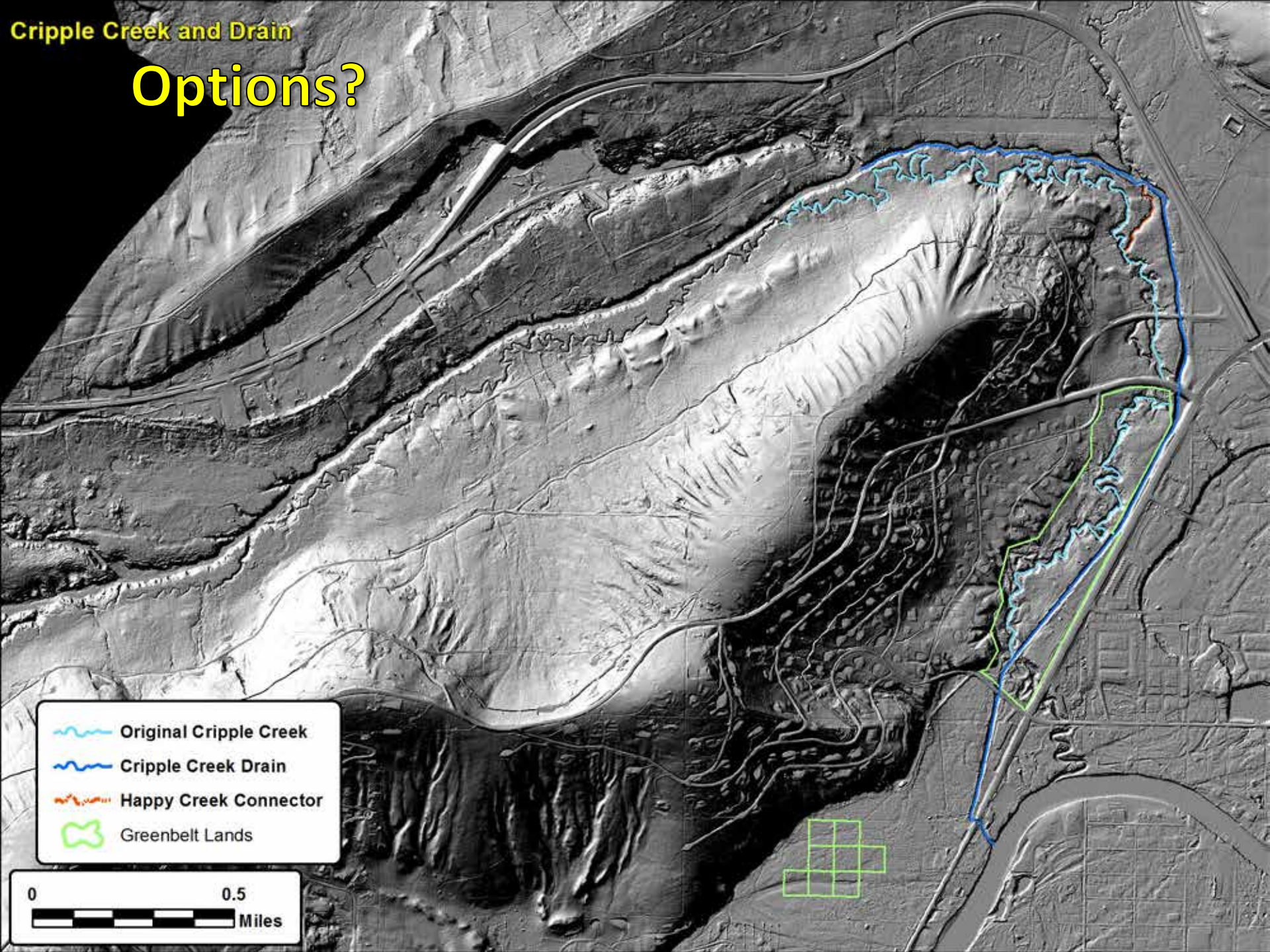


0 1 2 Miles

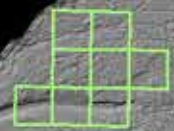
# Cripple Creek 1938

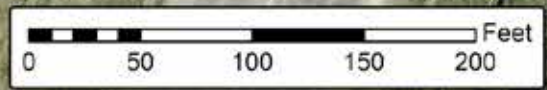


# Options?



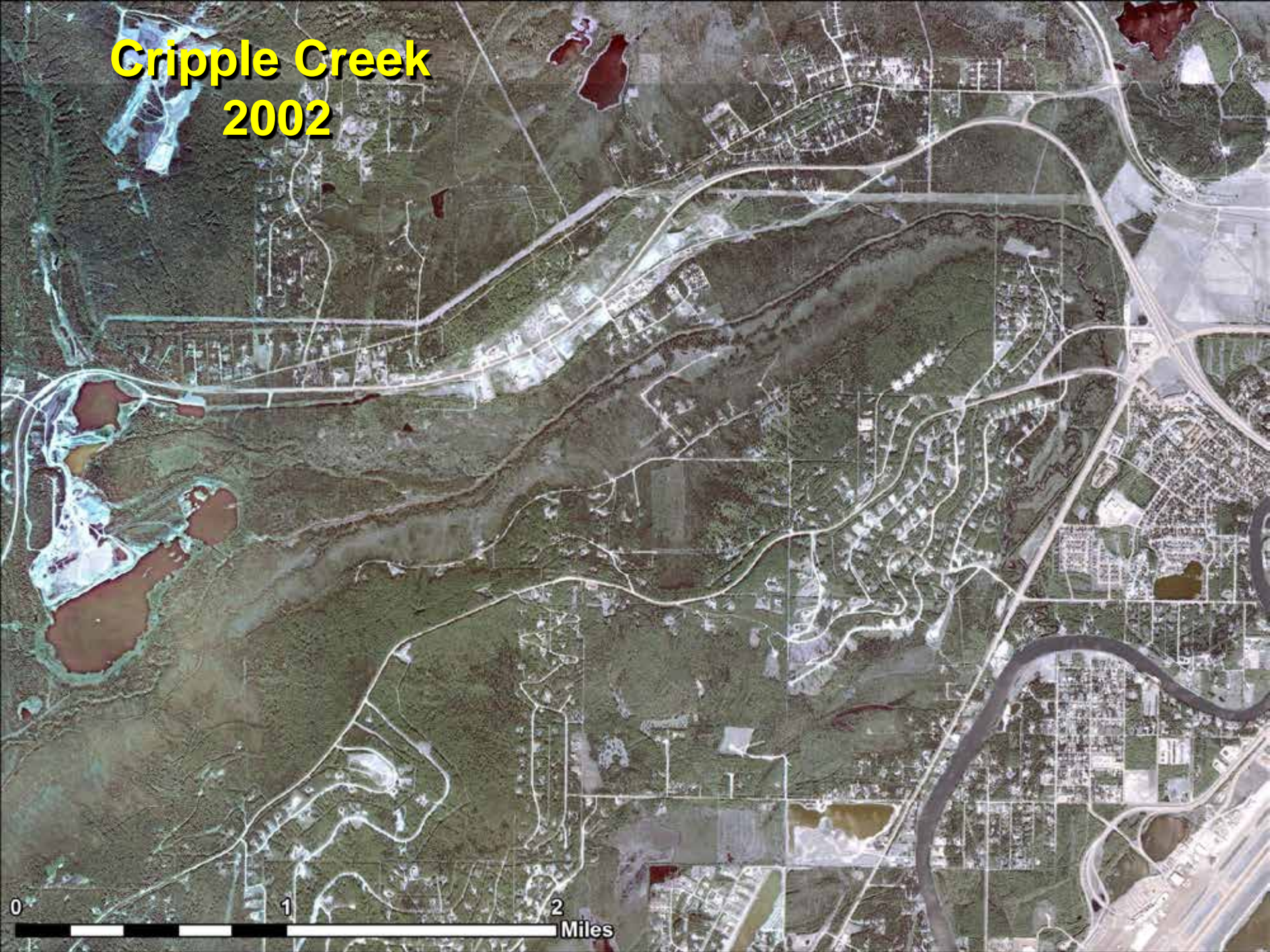
-  Original Cripple Creek
-  Cripple Creek Drain
-  Happy Creek Connector
-  Greenbelt Lands







# Cripple Creek 2002



0 1 2 Miles

# Cripple Creek 2002

Google Earth  
8/27/1996

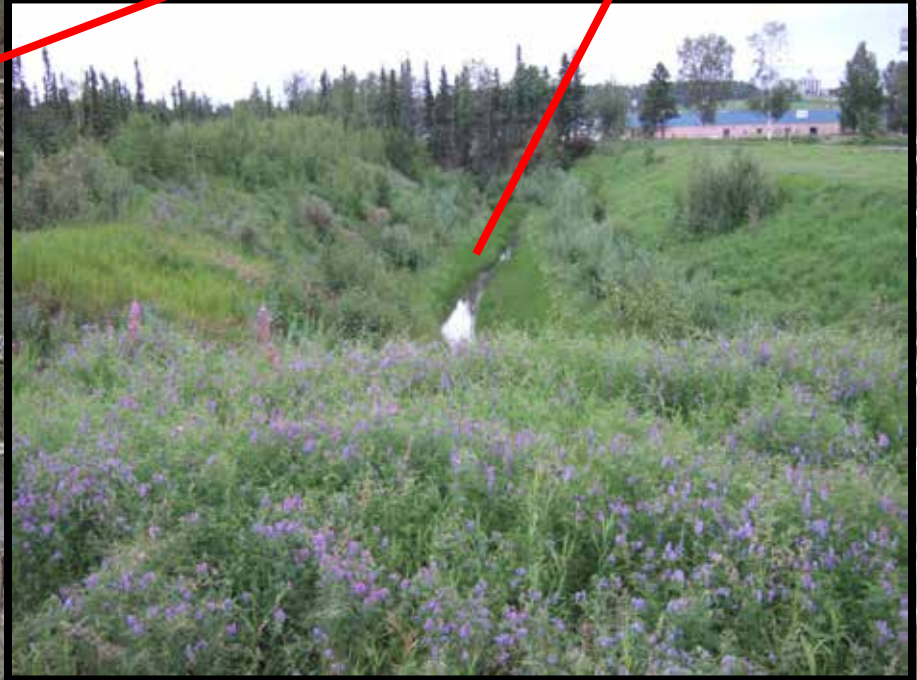
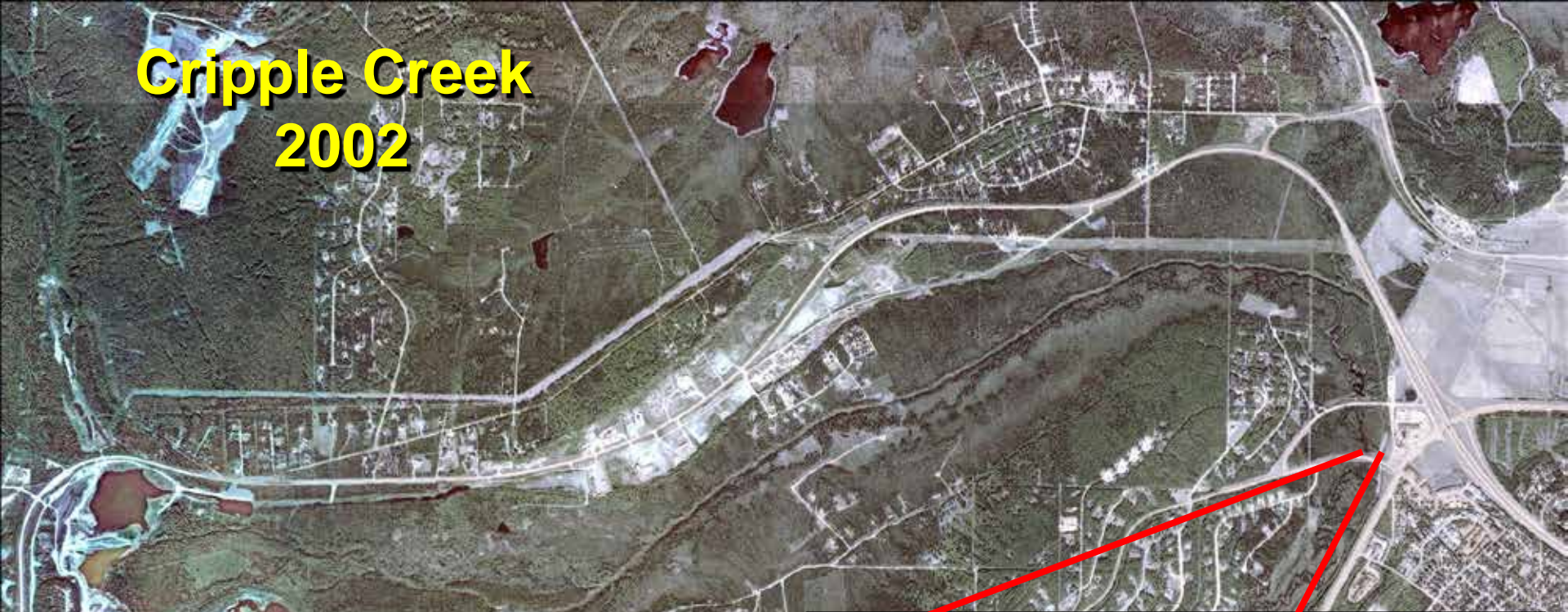


# Cripple Creek 2002






0 1 2 Miles



# Cripple Creek 2002



# Proposed Cripple Creek Connection Across Chena Ridge Road

-  Culvert
-  Excavated Channel
-  Greenbelt Lands

## Select Contours from 2010 LiDAR

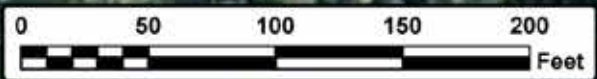
-  10-ft Contours
-  2-ft Contours

9/10/14



Culvert 135 ft

Excavated Channel 186 ft



Base map from 2012  
Aerial Photography

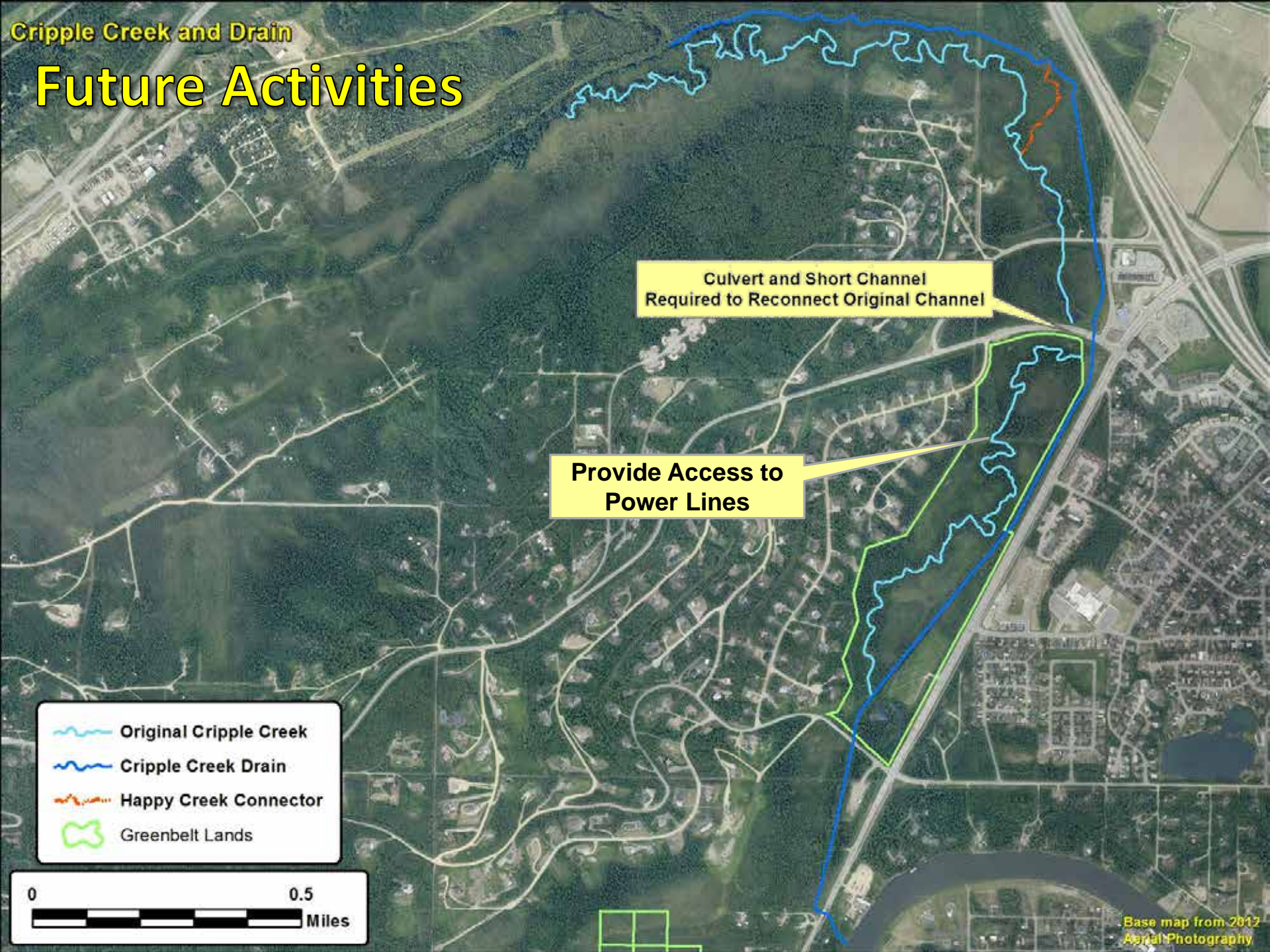
# Future Activities

Culvert and Short Channel  
Required to Reconnect Original Channel

-  Original Cripple Creek
-  Cripple Creek Drain
-  Happy Creek Connector
-  Greenbelt Lands



# Future Activities



Culvert and Short Channel  
Required to Reconnect Original Channel

Provide Access to  
Power Lines

-  Original Cripple Creek
-  Cripple Creek Drain
-  Happy Creek Connector
-  Greenbelt Lands



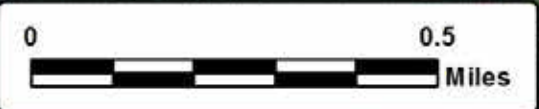
# Future Activities

College Utilities and Chena Spur Road Crossings

Culvert and Short Channel Required to Reconnect Original Channel

Provide Access to Power Lines

-  Original Cripple Creek
-  Cripple Creek Drain
-  Happy Creek Connector
-  Greenbelt Lands





# Future Activities

Widen and Deepen Happy Creek Connector, Construct Diversion in Drain

College Utilities and Chena Spur Road Crossings

Culvert and Short Channel Required to Reconnect Original Channel

Provide Access to Power Lines

-  Original Cripple Creek
-  Cripple Creek Drain
-  Happy Creek Connector
-  Greenbelt Lands



# There are Fish in the Cripple Creek Drain



But a  
Natural  
Meandering  
Channel  
Would  
Provide  
Much More  
Habitat

# Cripple Creek Drain Which Path Shall We Follow?



Downstream Confluence of Natural Channel and Drain