

INTERIOR ALASKA LAND TRUST

SPECIAL 2020 FUNDRAISING UPDATE

Dear Members,

As we prepare to say goodbye to the challenging year of 2020, we're excited to share some great news for the Goldstream Valley. With your generous help, we acquired the Steffensen-Dix parcel bordering Blueberry Preserves and just began a promising discussion to conserve a large block of forest and wetland in western Goldstream Valley. Together, these two pieces protect critical trail and habitat continuity in perpetuity. We are not far from our dream of a completed greenbelt.

Thank you to all who attended our virtual Annual Meeting on October 28, 2020. We have a lot of exciting projects slated for 2021 that need your support, including critical trailhead acquisitions and the construction of footbridges to connect trails over Cripple Creek. Check out our Facebook page and website for more news and updates. Our full newsletter will go out in Spring 2021.

As always, thank you for all your continued support. It makes our conservation work possible. Wishing you happy holidays and a healthy and happy 2021.

Christin Swearingen, Conservation Coordinator •

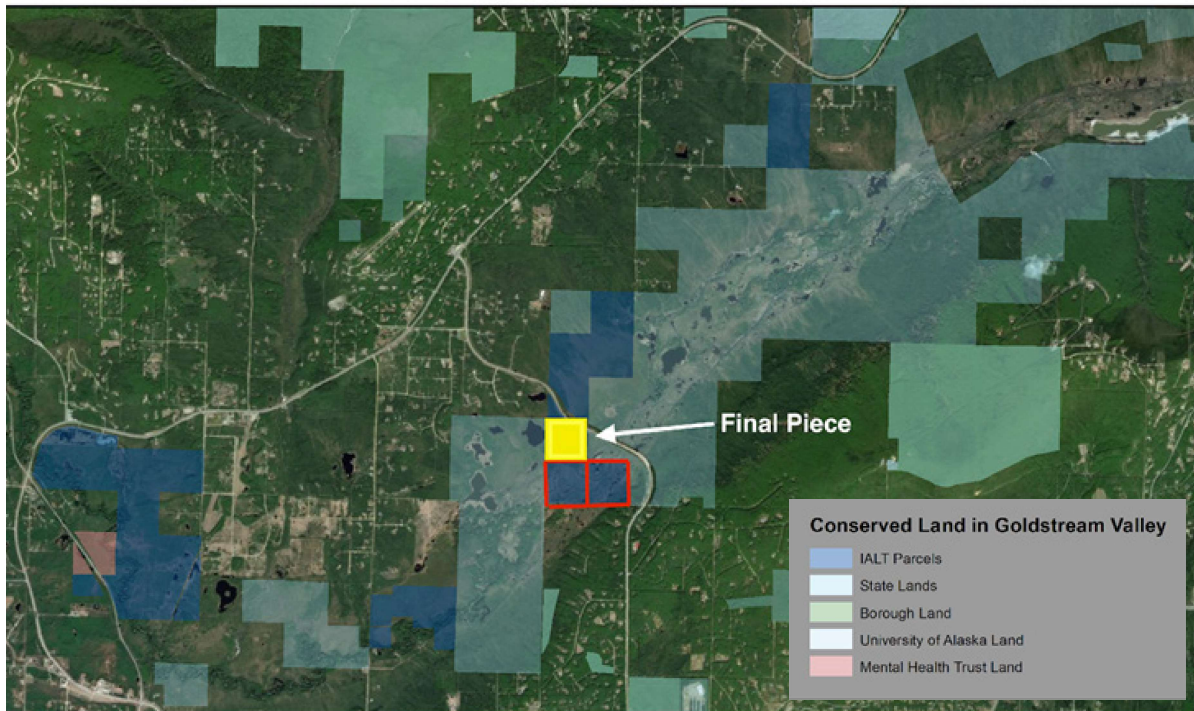
END OF YEAR DONATIONS

Member donations make the work we do possible. Please consider making an end of year donation or renewing your membership today on our website interioraklandtrust.org. Membership levels start as low as \$25.

Prefer to donate by check?
Please make checks payable
to Interior Alaska Land Trust
and mail to >>>

Interior Alaska Land Trust
P.O. Box 84169
Fairbanks, AK 99708

Questions? Call 907-322-3462



STEFFENSEN-DIX PARCEL

Thank you, Donors!

Thanks to an outpouring of support from our membership combined with a \$20,000 loan, IALT was able to purchase the final piece of the Steffensen-Dix property on October 20, 2020. This critical purchase connects the Goldstream Public Use Area with our Blueberry Preserves property. Frank Steffensen and his sister, Christina Dix, sold their property to IALT with the wish that it be conserved forever.

After traveling to Alaska with her family by station wagon in 1958, Frank and Christina's mother initially purchased the property in the mid-1960s. They frequently visited from out of state. Between roughly 1985 and 2005, Frank moved to Alaska and lived in a dry cabin on the northern parcel. He enjoyed watching the forest mature and observing the steady increase in summer bird populations. Both Frank

and Christina value having the parcel's wetlands and green space conserved and they believe the existing winter trail as an asset for the community to enjoy.

This piece is truly a keystone for central Goldstream Valley. Together, these three parcels connect two parts of the Goldstream Public Use area across Ballaine Road. They preserve a vital trail corridor for winter recreation, protect a section of Goldstream creek, and are important habitat for moose, foxes, beaver and birds.

Although the land is now protected in perpetuity, we still need your help to repay a \$20,000 loan. If you are an avid trail user or support of the Goldstream Public Use Area, please consider making a donation today. •

SPECIAL DONOR OPPORTUNITY

Secure a public trailhead for your community



We have a unique opportunity for a special donor who would like to secure a trail head in perpetuity.

This trail head is frequented by many users in the Fairbanks area and is an opportunity to secure the parcel and public access point in one step. Please contact us for additional information:

interioraklandtrust@gmail.com
907-322-3462

NEW PROPERTY: OSBORNE

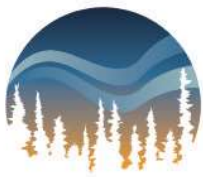
Generous land donation in central Goldstream

In July 2020 Daniel Osborne generously donated a 40-acre parcel of forest in central Goldstream valley.

Back when Mr. Osborne purchased the property, it was surrounded by State lands that were open to the public, and he felt as though “from my cabin, by crossing only a single road and careful choice of route, one could hike (maybe with a wade or short swim) all the way to the Arctic Ocean or Bering Sea without crossing another road.”

Mr. Osborne saved the land from development in order to keep it wild forever. •





INTERIOR
ALASKA
LAND
TRUST

P.O. Box 84169
Fairbanks, AK 99708

www.interioraklandtrust.org