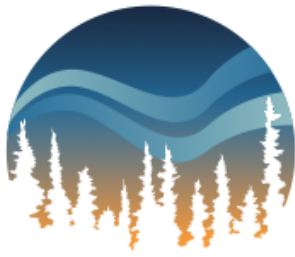
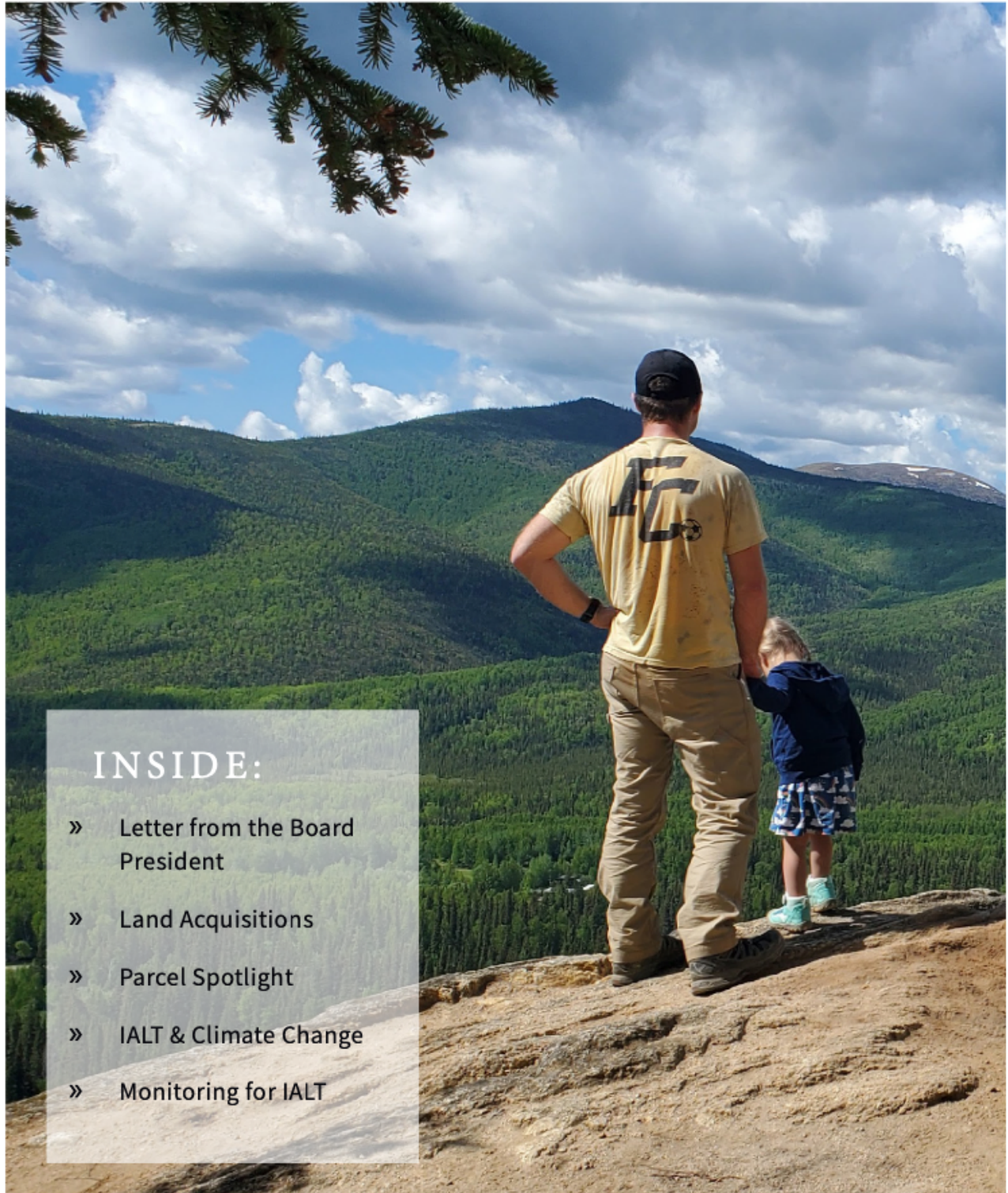


SUMMER 2022



# INTERIOR ALASKA LAND TRUST



## INSIDE:

- » Letter from the Board President
- » Land Acquisitions
- » Parcel Spotlight
- » IALT & Climate Change
- » Monitoring for IALT

# FROM THE BOARD PRESIDENT

---

Owen Guthrie  
IALT Board President

Greetings! Summer is a busy time for IALT, and we want to thank all our wonderful volunteers! With your support and the help of other invaluable partners, our all-volunteer board is pushing ahead with several major initiatives, working with local landowners to establish and maintain many diverse conservation projects.

Together with the United States Fish & Wildlife Service, we are planning to wrap up our multi-year project to restore flow to the historic channel of Cripple Creek. We could not have accomplished this important work without our local partners: DOWL Engineering, Drennon Construction, and Fairbanks Soil and Water Conservation District. With their help and yours, IALT completed this four-phase project in the fall of 2020. Although the rerouting work did not survive the heavy run-off in spring of 2021, we are reconstructing this June and July with a build that is guaranteed to survive the unusual combinations of ice and snowmelt we endure each spring. We could not have succeeded without all the enthusiastic support from the community and the USF&WS. Thank you!

We also continue to have strong community support for our Goldstream Greenbelt. We worked with long-time friends and partners, Bob and Bobbie Ritchie, to conserve an additional forty acres in the heart of lower Goldstream. We are getting closer and closer to connecting all the pieces of the puzzle. Soon, we will be able to concentrate on the periphery of the greenbelt, expanding conserved spaces and improving trails in other parts of Goldstream. Thank you to Bob and Bobbie Ritchie and all our members!

As an accredited land trust, IALT is able to work more effectively with external funding agencies and partners. We are in the process of renewing our accreditation with the National Land Trust Alliance, and we are thankful to Katja Kiekgers for her assistance with this process!

Thanks to our members, these achievements and many more are possible. Our all-volunteer board very much appreciates your support, for we have many initiatives slated for 2022. We make the most of your contributions, and we need your help now more than ever. If you are interested in getting involved in any of our projects, please contact me or Andy Keller. Fairbanks is a wonderful community, and we enjoy working with you and all of our partners. Best wishes for the summer! ♦

## THE NUMBERS

### 2021 INCOME

Donations	
Corporate	\$8,000
Individual	\$249,000
Gov. Grants	\$479,000
<b>TOTAL</b>	<b>\$716,000</b>

### 2021 EXPENSES

Operations	\$8,000
Land Acquisition	\$260,000
Land Stewardship	\$26,000
Stream Restoration	\$359,000
<b>TOTAL EXPENSES</b>	<b>\$653,000</b>
<b>NET INCOME</b>	<b>\$63,000</b>



# LAND ACQUISITION UPDATE

---

Andrew Keller  
Conservation Coordinator



*Photo courtesy of Scott Bredbenner, Ring-Necked Duck, Goldstream Greenbelt, 2022.*

The Interior Alaska Land Trust is growing! We are adding properties to our two major projects, the Goldstream Valley and Chena Flats Greenbelts. We are also acquiring easements on properties as far away as the foothills of the Brooks Range and expanding our work in the North Pole area. Progress continues on our Chinook Park project, which is located at the corner of Chena Pump and Chena Ridge roads. Our goals include creating an all-season trail that parallels Cripple Creek and its important salmon habitat. When it is completed, students from nearby Woodriver School will be able to walk along the stream, learning about fisheries ecology and salmon habitat. We still have much work to do on the trail. This effort will require at least thirty thousand more dollars. If you or anyone you know would like to contribute to this project, please contact the Interior Alaska Land Trust Treasurer, Martha Raynolds, at

[martharaynolds@gmail.com](mailto:martharaynolds@gmail.com)

The Land Trust properties are conserved for the benefit of the community now and for generations to come. One of the tremendous pleasures of working with the Land Trust is meeting the volunteers, supporters, and partners working together for the common good. Please feel free to give me a call if you have an idea that would enhance our efforts or benefit the community in any way. And don't forget to get out and enjoy the properties! There are all sorts of interesting things to discover. You may find a Ring-Necked Duck, get some exercise, or enjoy some relaxing quiet time. ♦

Contact Andrew at 907-699-2281 or  
[amkeller@alaska.edu](mailto:amkeller@alaska.edu)

# NEW PARCEL SPOTLIGHT

Andrew Keller  
Conservation Coordinator

Christin Swearingen  
Contractor

Next time you are driving east on Farmer's Loop Road, look for a three-acre clearing on the right side with a few telephone lines and a small shed on the far end. Though this parcel is small, it is an important acquisition for IALT and the outdoor recreation community in Fairbanks. Our vision for this property is to build a trailhead, providing access to the Creamer's Field Migratory Waterfowl Refuge trail system. Designated as multi-use, these trails are popular with hikers, snowshoers, skiers, fat bikers, skijorers, and mushers. We hope that they will take advantage of this new access point to get outdoors in the wintertime and enjoy themselves. Thanks to Jack and Carol Wilbur for the generous donation that made the purchase of this parcel possible. ♦



## MEMBERSHIP

Member donations make the work we do possible. Please consider making a donation or renewing your membership today on our website [interioraklandtrust.org](https://interioraklandtrust.org). Membership levels start as low as \$25.

Prefer to donate by check?  
Please make checks payable to  
Interior Alaska Land Trust and  
mail to >>>

Interior Alaska Land Trust  
P.O. Box 84169  
Fairbanks, AK 99708

Questions? Call 907-322-3462



# LAND TRUST WORK & CLIMATE CHANGE

---

Martha Raynolds  
Treasurer, IALT Founder



*Photo courtesy of Scott Bredbenner, Beaver, Goldstream Greenbelt, 2022.*

When you think of climate change solutions, land trusts may not be what you think of first. However, natural landscapes are a critical piece of community resiliency in the face of a changing climate. In Fairbanks, our wetlands tend to be areas of permafrost, where carbon is sequestered in the frozen ground. Protecting these wetlands can make sure that carbon is not disturbed and stays in the ground. In addition, wetlands play an important role in flood control, slowing and storing runoff from surrounding uplands. Increasing storm intensity makes this mitigation role more critical for protecting surrounding residential areas. Much of IALT's land conservation has focused on wetlands, because they are the last areas to be developed. They also represent trail corridors for both people and wildlife and provide important habitat for birds. So, if you get involved in the North Star Borough's Climate Action Plan, consider mentioning that support for conserving land in wetlands and along drainages should be part of our local approach to climate resiliency. ♦

## LAND CONSERVED

PARCELS OWNED: 15

ACRES - OWNED: 1,308.6

EASEMENTS: 17

ACRES - EASEMENTS: 1,317.7

TOTAL PROPERTIES  
CONSERVED: 32

TOTAL ACRES  
CONSERVED: 2,598.3

# PROPERTY MONITORING FOR IALT

---

Maxwell Plichta  
IALT Volunteer

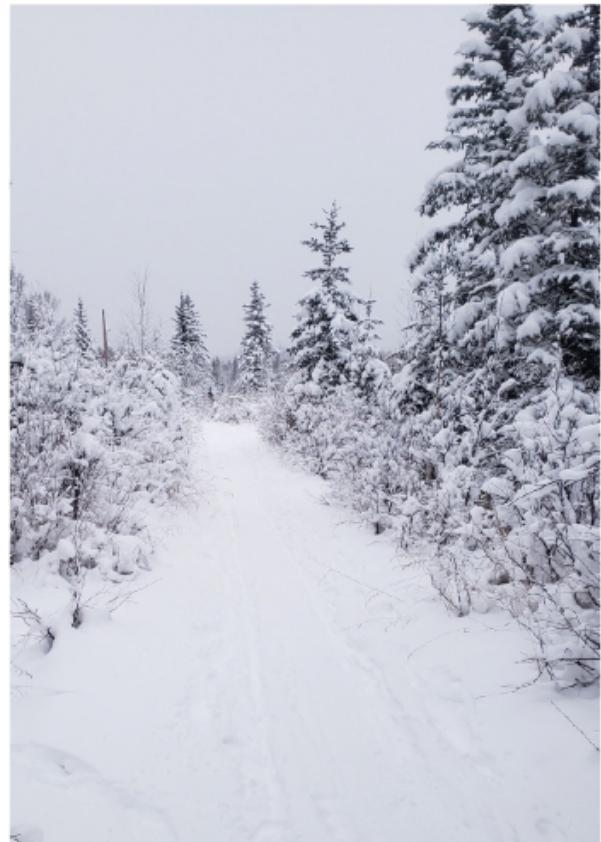
Every year, the Interior Alaska Land Trust (IALT) must monitor its properties to observe any changes that have taken place. These changes could be caused by natural forces or human activities. Monitoring them is important to ensure that the properties are being used in a manner that will not jeopardize IALT's conservation goals. To monitor all their properties, IALT encourages community members to volunteer to become Land Stewards. Becoming a Land Steward is easy, and the time commitment is small. One afternoon will suffice! First, Land Stewards review the previous year's monitoring report. Then, they visit the property, make observations, and take notes and photographs. Finally, they complete a short report form. IALT has properties big and small that need monitoring, so they are sure to have one that fits your time commitment and level of adventure.

My partner and I have been Land Stewards for various properties in the Goldstream Valley for the last couple of years. We have thoroughly enjoyed the opportunity to get off-trail and explore new areas of our proverbial backyard. Over the years we have discovered new trails, witnessed how properties can change over time, and had great wildlife viewing experiences. Some of the properties that we have monitored are now some of our favorite scenic places to recreate near Fairbanks.

Hands down, our favorite part about being Land Stewards is taking photographs during our property visits. In order to monitor changes to particular areas over time, IALT has photo-points for each of the properties. Photos are at these points in the same place year after year.

We always get a kick out of trying to line up the photos in the exact same way as previous years. It is like being in a real-life boreal forest I-Spy book. It is super fun for adults and would also be a great activity for families!

If you are interested in learning more about how to volunteer as a Land Steward with IALT, it is easy! Just head to IALT's "Volunteer With Us" Webpage to enter in some details to get started. It is a great way to get outside and support the Interior Alaska Land Trust.◆



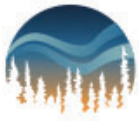
*Photo Courtesy of Max Plichta & Marissa Breslin,  
Parrish Property, 2021*





Top photo of a pond courtesy of Andrew Keller, Bottom Photo of a Wood Frog courtesy Scott Bredbenner. Both photos in the Goldstream Greenbelt, 2022





# INTERIOR ALASKA LAND TRUST

P.O. Box 84169  
Fairbanks, AK 99708

[www.interioraklandtrust.org](http://www.interioraklandtrust.org)

## THANK YOU TO OUR MEMBERS

ABR, Inc., H Adams, F&J Adams, B Allen, E Alvey,  
G Ames, S Andersen, D&M Anderson, P Ashbridge,  
L Aylaian, A Babcock, N Baird, N Ballou, R Barry,  
E Barry Garland, A Batten, S Beck, E Belknap, B  
Bettisworth, K Bevernitz, M Biagi, L Biderman,  
D&S Bishop, M&D Bishop, S Bishop, K Bollinger,  
C Bonds, T Booms, S Bredbenner, D Bret-Harte,  
L&Karla Bright, KL Broberg, M&T Buckley, S Budge,  
A Buetow, K Bull, P&D Burns, H&D Burrell, K Burrell,  
L&B Bursiel, J Cable, A Canino, K& Cannone,  
M&T Chapin, B Charlton, E Clark, K&S Clautice, P  
Condon, S Cook, A Cooke, D&JE Cowee, A Craven,  
P&R Crisenbery, J Daley, T Daley, S Dauenhauer, G  
Davidson, J Davies, J Dawe, W Deacy, L DeFoliart,  
J&P Delamere, Design AK, T Devine, J&N DeWitt,  
K Dillon, A Doeringhaus, S Dohner, R&J Dupras, K  
Durham, M&J Durst, P Eagan, H Eicken, N Eiseman,  
C&R Everett, P Ewers, M Farrell, D Fee, C Ferree, J  
Fitzgerald, D Flaharty, B&L Flodin, N Foster, C&R  
Foytich, L Francis, J Franz, Frontier Fin.Planning,  
C Garber-Slaght, K Garrity, T Gasbarro, T George,  
A Godduhn, K Golkin, L&S Grage, P Groves, J  
Groves, O Guthrie, ML&D Guthrie, L Gutierrez, D  
Guttenberg, E Guttenberg, The Haberdashery,  
M&B Haley, B Hanley, O Hanley, S&J Hanses, D  
Hampton, W Hao, G Happ, J Hardenbrook, R&A

Harrington, K Hart, J Haverlack, S Hayes, M Head,  
C Hensel, B&J Henszey, E Hewitt, C Hiemstra, R  
Hompesch, G Hopkins, L H, D Huebner, T Ignacio,  
B Jackson, J James, K Jensen, R Johnson, R  
Johnson &, N Jones, T&J Jorgenson, S Justice, L  
Kamerling, K Kassel, A Kaufman, J Kaufman, T Kay,  
C Kaynor, F&J Keim, M Kellner, D Kiely, R King, C  
Klopf, J Koman, H Koponen, D Kovacich, A Kuenzli,  
Libby Kugel, T Kurkowski, B&N La Belle-Hamer,  
J Lageson, A Larson, C Leistikow, E Leistikow, C  
Leonard, S&B Levey, S Lewis, C Linkswiler, J Lipka,  
S Liss, C Loeffler, C Roblee, D Lokken, L Lynch, M  
Macander, M Mannix, P&J Marshall, P&J Martin,  
S Masterman, D Mather, G Mayo, W McAmis, D  
McCausland, B McGrath-Bernhard, D McGuire M  
Mcinelly, B McIntosh, J Merkel, Metro. Garage, C  
Meyer, C Meyers, HA Meyers, J Mickley, S Milkowski,  
D Mitchell, S Moll, F Moore, J Moore, P Morrow,  
E Muehling, G Myerchin-Tape, R Nancarrow, P  
Nelson, C& G Newman, MA Nickles, M&J O'Brien, S  
Odegard, D Osborne, C Parker, K Parr, E Parr, C Parr  
III, P&J Peirsol, D&T Pendergrast, I Petersen, J&D  
Pinnell Stephens, A Plager, D Partee, M Plichta, R&B  
Post, K Post, A Prichard, P Raybeck, M Reynolds, B  
Redinius, P&T Reichardt, J&T Reilly, J Richie, B&B  
Ritchie, S Rivet, S Royston, B Rozier, A Ruggles,

L Schandelmeier, J Schicknes, S Schmoker, E  
Schoen, J Schwartz, C Scott, T Seaton, R Seifert,  
M Shields, L Silberling, L Simmons, M Simon, D  
Sims, J Slaght, JR&T Smith, H Smith, M&L Soden,  
A Sorenson, M Sorum, M Spindler, M&G Springer, S  
Stensland, N Stewart &, R&L Stoltzberg, C Stragier,  
L Stuby, A Sutton, C Swearingen, T Swearingen, D  
Swift, S Swift, B&R Tabbert, S Tabbert, K Tape, W  
Tape, I Taylor, S Taylor, A Thurston Hicks, K Timm, T  
Tomczak, T Tragis, J Triplehorn, E Troyer, A Vagedes,  
B Van Dam, M Wald, S Walker, J Walters, W Walters,  
V Wang, J Welch, K Weller, A&H Weller, K West, M  
Whalen, Ken Whitten, KK Whitehouse, J&C Wilbur,  
A Wilbur, P Wille, J Williamson, S Winder, B Witte, M  
Wyatt, M Yazwinski, E&F Yazwinski, C Yuncker, C&C  
Zachel, M Zalar, S Zielinski

### IALT Board

Owen Guthrie (president), Martha Reynolds  
(treasurer), Brenden LaBelle-Hamer (vice  
president), Jennifer Schell, Seth Adams. Outgoing:  
Kayde Kaiser Whiteside and Aaron Cooke.  
Incoming: Sue Bishop and Maxwell Plichta